

A YEAR IN REVIEW
2022



Nashville
Public Education
FOUNDATION

HELPING CHILDREN THRIVE SINCE 2002



YOU ARE MAKING A DIFFERENCE FOR OUR STUDENTS AND SCHOOLS.

Dear Friends of Public Education,

We are thrilled to be celebrating our 20th year with you! For two decades, the Nashville Public Education Foundation (NPEF) has fostered data-driven solutions that have led to tangible results in professional learning for teachers, teacher pay, principal quality, college access and success, and more.

Founded originally as a fundraising organization to support Metro Nashville Public Schools (MNPS), our mission has evolved to include strategic programming and investments that celebrate the successes of our educators and schools, advocacy for improved policies, support for MNPS as a consultant and thought partner, and opportunities to bring stakeholders together to tackle some of education's biggest problems.

The Nashville Public Education Foundation serves a critical role in our community to improve outcomes for our students. By supporting our work and our public schools, you are making a difference for Nashville's children and youth. Thank you for your support as we work to ensure all students thrive in our public schools every day.

With gratitude,

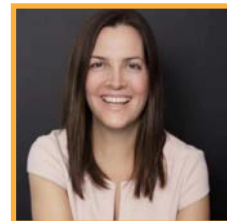


Meg Harris
NPEF Board Chair



Katie Cour
President and CEO

MEG



KATIE



A YEAR IN REVIEW

2022



Nashville
Public Education

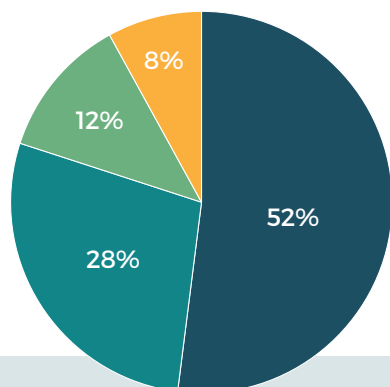
FOUNDATION

HELPING CHILDREN THRIVE SINCE 2002

CELEBRATING OUR 20TH YEAR

The Nashville Public Education Foundation is celebrating its 20th anniversary year! For two decades, NPEF has worked to improve public schools first through fundraising and more recently by supporting teachers and leaders, celebrating success and innovation, and advocating for change.

With an unwavering focus on helping to shape a future where every student thrives, NPEF has proven that bold change is best achieved with an informed and united community of educators and business and civic leaders.

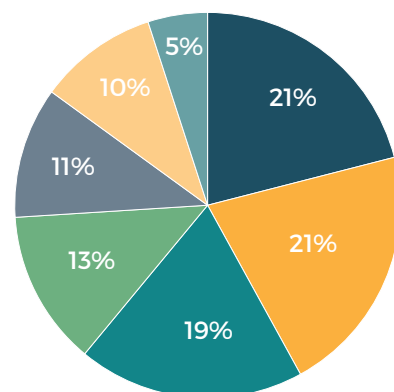


WHERE OUR FUNDING COMES FROM

- Foundation Grants
- Corporate Partners
- Individual Donors
- City Government

WHERE OUR FUNDING GOES

- Grants to Educators
- Supports to Schools
- District Programs
- Research
- Advocacy
- Educator Development and Supports
- Supports for Students and Families



THE HISTORY OF NPEF

2002

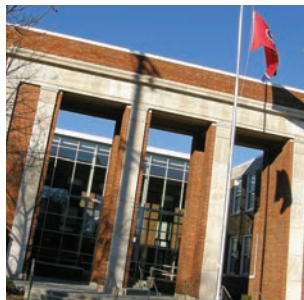
NPEF is
founded



2005

Holds first
Public Schools
Hall of Fame

2008



Opens Martin
Professional
Development
Center

2014

Creates Blue Ribbon
Teacher Awards

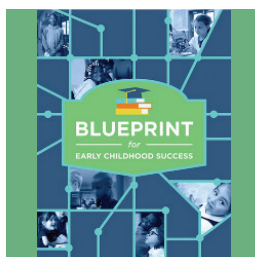


2015

Hosts Project
RESET

Develops Blueprint
for Early Childhood
Success

2017



2018



Releases first
Bridge to
Completion
Report

2019

Publishes Thriving
Schools Framework

2019

Launches Nashville Goes to
College online resource

2020

Produces
By Design
documentary



2021



Leads Teacher
Pay Study

2022

Launches
Teacherpreneur



CONVENING STAKEHOLDERS

We convene community leaders and stakeholders to tackle some of education's most challenging issues.



FACILITATING CRITICAL CONVERSATIONS

Better Together

We facilitate the Better Together collaboration between MNPS and Nashville State Community College to help ensure any MNPS student can be successful at Nashville State.

Partnership for Educational Equity Research (PEER)

We lead conversations between Vanderbilt University and MNPS to codesign and pursue an equity-focused research agenda leading to changes in classroom practice.

By Design: The Shaping of Nashville's Public Schools

Building on the release of our documentary about the history of Nashville public schools, screenings continued in 2022, with over 5,500 viewers to date. The film was also screened at South by Southwest (SXSW) EDU, an event that fosters innovation and learning in the education industry. The film was also embedded in MNPS's Diversity, Equity, and Inclusion professional development for all teachers.

“NPEF leads the right conversations by bringing diverse voices to the table to celebrate successes and to drive change, and by connecting people who share our passion for seeing all students thrive in Nashville's public schools.”

MEG HARRIS, NPEF BOARD CHAIR



SUPPORTING METRO SCHOOLS

We support Metro Nashville Public Schools as a thought partner, driving strategic discussions and leading district strategies.

SUPPORTING GREAT TEACHING AND LEADING

Teacher Leadership Institute

We support MNPS's Teacher Leadership Institute (TLI), a multi-year cohort experience in which teachers grow their skills, experience, and network to address school-based inequities.

Science of Learning

We funded an interactive professional learning mini-series for MNPS middle school teachers about the science of learning.

College Access Champions

Our College Access Champions Fellowship, a collaboration with GEAR UP Nashville and Oasis Center, trains and empowers MNPS educators to help students navigate the college-going process.

Principal Supervisor Support

We funded the National Institute of Excellence in Teaching to support our principal supervisors to develop great principals.

ENHANCING EDUCATIONAL EXPERIENCES

Tech Goes Home

We provide technology training and free laptops and hotspots to MNPS families to help address the digital divide.

Music Makes Us

We invest in music instruction and instruments to improve MNPS students' access to great music education.



CELEBRATING SUCCESS AND INNOVATION

We celebrate innovative and inspiring ideas, practices, and achievements that help build thriving schools.

BRINGING NASHVILLE TOGETHER IN SUPPORT OF PUBLIC SCHOOLS



The 18th Annual Public Schools Hall of Fame

The Hall of Fame has become an annual milestone for community leaders to gather to celebrate the successes happening in Nashville's schools, honor individuals and organizations committed to our schools and students, and to inspire solutions to challenges in education.

Honoring NPEF's Founding Director, Kay Simmons, with the Nelson C. Andrews Distinguished Service Award



Kay Simmons was posthumously honored with the prestigious Nelson C. Andrews Distinguished Service Award at this year's

Public Schools Hall of Fame for her service and dedication to ensuring Nashville's children and youth – particularly those experiencing the most hardship or barriers to success – were seen, heard, and represented. She was relentless in her pursuit of all students thriving in school each day.



HONORING OUR CITY'S TOP TEACHING TALENT

Blue Ribbon Teacher Awards

Since 2014, we have partnered with Metro Nashville Public Schools and Nashville's Agenda to honor more than 400 exceptional educators in our district.

Music Teachers of Excellence

NPEF is proud to partner with the Country Music Association Foundation to support its national teacher recognition program, which honors ten amazing MNPS educators annually.

“ Teachers come to work every day focused on meeting students where they are, helping them succeed, and being leaders in their classrooms and schools. We're grateful to the Nashville Public Education Foundation for continuing to celebrate great teaching with such generosity every year. ”

~DR. ADRIENNE BATTLE
MNPS DIRECTOR OF SCHOOLS

LEVERAGING TEACHERS TO DRIVE CHANGE



Teacherpreneur

This year we launched a new program aimed at harnessing educator innovation – Teacherpreneur, a professional learning experience for educators to develop their big ideas into pilot programs that could make a major impact for students, families, and schools in our district. Participants pitched their plans for a chance to win \$25,000 and seed funding to pilot their ideas.

The top award of \$10,000 went to Quanita Adams, a Pearl-Cohn High School teacher, who proposed a network of supports for novice teachers in schools that experience high teacher turnover.



“Teacherpreneur puts education experts in the driver’s seat and enables them to use their expertise to make crucial changes for our students.”

~INAUGURAL TEACHERPRENEUR COHORT MEMBER



ADVOCATING FOR CHANGE

We advocate for improved policies and practices that remove barriers to student success in public education.

RAISING AWARENESS ON CRITICAL TOPICS

Working towards better pay for support staff

We worked with MNPS and the Urban Schools Human Capital Academy to analyze pay for non-teaching support such as bus drivers, cafeteria workers, and teacher's aides. The study led to a significant increase in pay for support roles.

Five years of college-going data

For the fifth year in a row, we collaborated with MNPS and the Tennessee College Access and Success Network to release the Bridge to Completion report, an annual analysis of postsecondary data of MNPS graduates and recommendations for improving student access and success in college.

Advocating for funding reform

NPEF raised awareness around the need to reform the state's funding formula and increase the total state allocation to education. We helped drive conversations around including a Cost Differential Factor, which helps account for Nashville's high cost of living, in the final Tennessee Investment in Student Achievement legislation.





DISMANTLING EDUCATION INEQUITIES

Designing a system that works for all students

We released a shortened version of our documentary, *By Design: The Shaping of Nashville's Public Schools*, that focuses on the desegregation era as well as a brief that encourages more conversations about the policies and decisions in our city's history that have established and exacerbated inequities for students.

We released a brief that explores how data on student experiences in and out of school are critical to informing policies and practices in our city, and we called for the creation of a Nashville Children and Youth Opportunity Index to assess student opportunities in our city and schools.



“NPEF helps teachers and principals identify innovative strategies to improve education for all students and keeps the community focused on creating a better future for our children.”

~TONY HEARD
-NPEF PAST BOARD CHAIR





NPEF'S BOARD OF DIRECTORS

Meg Harris, *Chair*

Alfonzo Alexander, *Vice-Chair*

Ashley Cook, *Secretary*

Robert E. McNeilly III, *Treasurer*

Tony Heard, *Immediate Past Chair*

Byron Trauger, *At-Large Member*

Brenda Wynn, *At-Large Member*

Harry Allen

Michelle Gaskin Brown

Sheila Calloway

Kate Chinn

Ron Corbin

Katie Cour

Ralph Davis

Annette Eskin

Joey Hatch

Greg Jones

Wanda Lyle

Janet Miller

Thomas J. Sherrard

Gail Williams

Jerry B. Williams

D.J. Wootson



MEG



ALFONZO



ASHLEY



ROB



TONY



BYRON



BRENDA

NPEF'S TEAM

Katie Cour, *President and CEO*

Colleen Gilligan, *Manager, Communications and Educator Outreach*

Jennifer Hill, *Vice President, Policy and Programming*

Melinda Judd, *Vice President, Development and Outreach*

Terri Totty, *Director of Operations*

Tashaye Woods, *Director of Project Management*



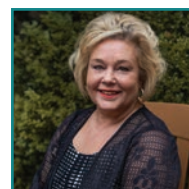
KATIE



COLLEEN



JENNIFER



MELINDA



TERRI



TASHAYE



THANK YOU TO OUR INCREDIBLE PARTNERS WHO MAKE OUR WORK POSSIBLE.

INNOVATORS

AllianceBernstein
Amazon
Google Fiber
Metropolitan Government
of Nashville and Davidson
County
Scarlett Family Foundation
SCORE

COLLABORATORS

Belmont University
Boedecker Foundation
Country Music Association
Foundation
Annette Eskind
First Horizon Foundation
Ingram Charities
J. Graham Inc.
Johanna A. Favrot Fund
Lipscomb University
Susan and Rick Mattson
MSB Cockayne Fund, Inc.
Nissan North America Inc.
UBS
Vanderbilt University

IGNITORS

Arbor Rouge Foundation
Asurion
Bass, Berry & Sims
Andrea Conte and
Phil Bredesen
Colliers International
Community Foundation
of Middle Tennessee
Ashley and Joe Cook
Brenda and Ron Corbin
Curb Records

The Dan and Margaret
Maddox Fund
Suann and Ralph Davis
Dettwiller Foundation
Dollar General
The Enchiridion Foundation
Enterprise Solutions
Carole and John Ferguson
Jennifer and Billy Frist
The Frist Foundation
Debbie and Joey Hatch
HCA Healthcare
Foundation
HCA Healthcare/TriStar
Health
Margaret and Tony Heard
James Stephen Turner
Family Foundation
The Jeffrey and Donna
Eskind Family Foundation
just keep livin Foundation
KraftCPAs PLLC
Lipman Brothers/R.S.
Lipman Company
Manuel Zeitlin Architects
The Memorial Foundation
Milton & Denice Johnson
Family Foundation
Juli Mosley
Nashville Area Chamber
of Commerce
Orion Building Corp.
Joelle and Brant Phillips
Piedmont Natural Gas
Pinnacle Financial Partners
Regions Bank
Richard Eskind and
Family Fund
Rogers Group Inc.

Anne and Joe Russell
Ryman Hospitality
Properties Foundation
Carole and John Sergeant
Dana and Tom Sherrard
Sherrard, Roe, Voigt
& Harbison
Sony Music Group
Spencer Fane
Stones River Group
Studio Bank
Tiny Mighty
Communications
Judy and Steve Turner
Karen Weeks
Wiseman Ashworth Trauger

TRAILBLAZERS

Alfonzo Alexander
Harry Allen
Melinda and Jeffrey Balser
Lauren and Brian Beem
Anne Brandt
Sheila Calloway
Cathy and Mark Cate
Caterpillar Financial
Services Corporation
Judith and Joe C. Cook, Jr.
Sondra and Doug
Cruickshanks
Sherry and Mark
Deutschmann
Deborah Farese
Fourth Capital
Stanley Graber
Meg Harris
Lyn and Fred James
Caleb Jones
Heloise Werthan Kuhn

Andrew Lange
LEAD Public Schools
Wanda and Jerry Lyle
Betty and Conn McConnell
Terri and Michael
McConnell
Caroline and Rob McNeilly
Candice and Andy
McQueen
Janet Miller
MP&F Strategic
Communications
Opportunity Nashville
Patrica and Stephen Peters
Kimryn Rathmell
C. Cybele Raver
Lisa and Michael Shmerling
Keith B. Simmons
Susan and Lucas Simons, Jr.
Janet and William Stead
Suwyn Family Foundation
The Steven & Laurie Eskind
Family Foundation
Ellen and John Tighe
Aleta and Byron Trauger
Carmen and Dwayne Tucker
VUMC Department
of Pediatrics
West Family Foundation
Gail Williams
Jerry and Ernie Williams
D.J. Wootson
Brenda Wynn

*And the hundreds
of Friends of Public
Education who have
supported us this year.*



A YEAR IN REVIEW 2022
INFO@NASHVILLEPEF.ORG | NASHVILLEPEF.ORG



HELPING CHILDREN
THRIVE SINCE 2002

NASHVILLE PUBLIC EDUCATION FOUNDATION

1207 18TH AVENUE SOUTH, SUITE 202 | NASHVILLE, TN 37212 | 615-727-1515